

The Landmark Bexhill On Sea, UK



TURNKEY SERVICES – Post Planning, Full Design Services & Project Delivery



COST

£9.4m new build

KEY FACTS

7 Storey residential

66 apartments

2 & 3 bedrooms

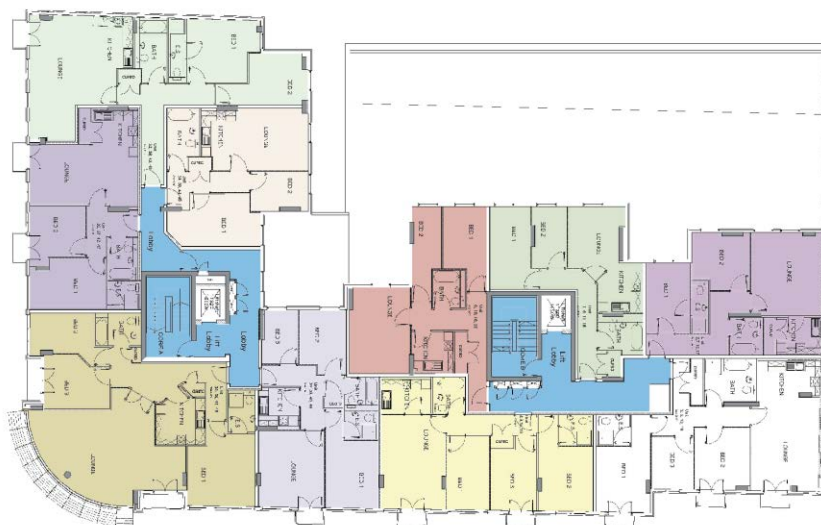
4 x A3 units

Underground car park

SERVICES

Turnkey Services

Completed 2010.



Project description

Phase 2 of a gateway project in Bexhill on Sea. The Landmark faces the recently completed De La Warr Heights.

The Landmark and De La Warr residential buildings form the catalyst of new development within the beach front of Bexhill, with stunning sea views and views of the De la Warr Pavilion.

CONSULT provided turnkey services to a Joint venture agreement between a developer and builder, to bring the scheme to fruition.

Completed Services
January 2010.